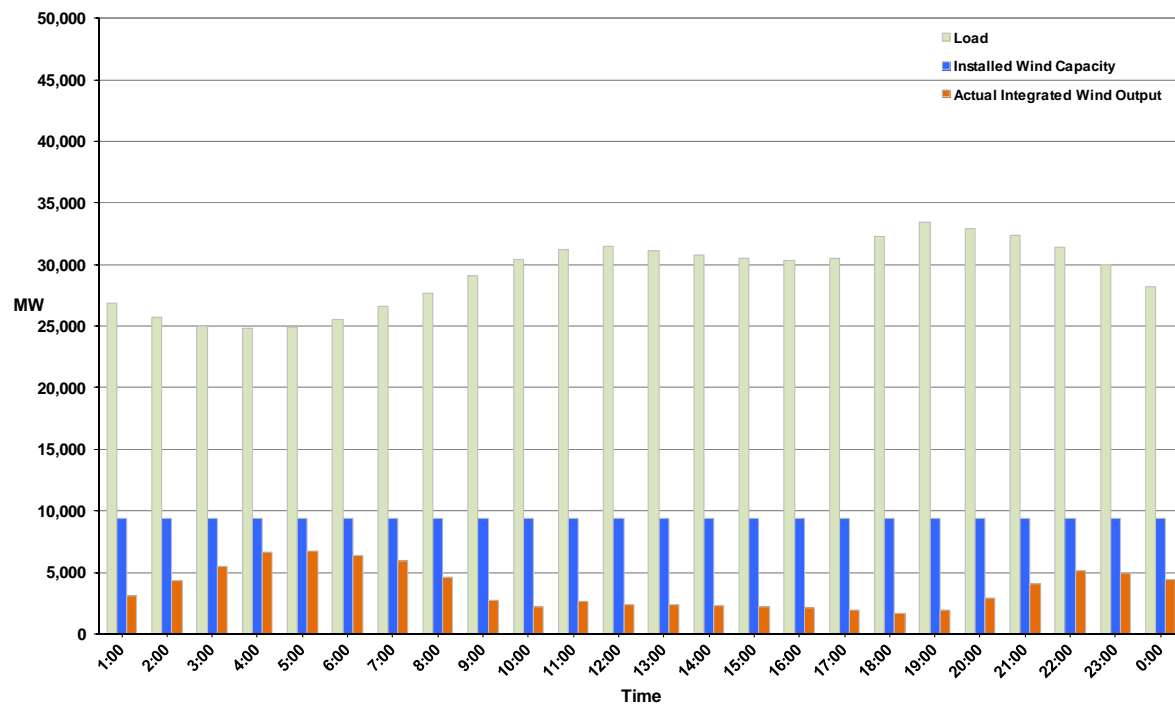




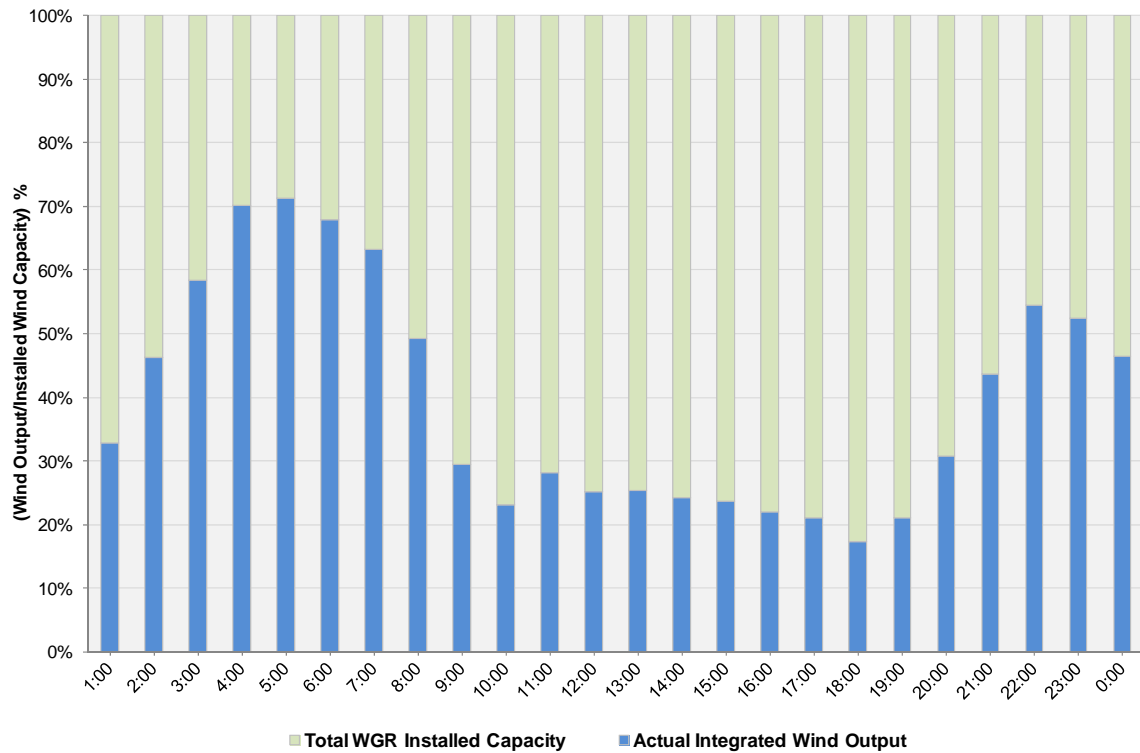
ERCOT Grid Operations Wind Integration Report: 12/03/11

Peak Load	33,402 MW
Load Peak Hour	19
Wind over Peak	1,985 MW
Wind Record 10/07/11	7,400 MW
Max Wind Value	6,936 MW
Wind Peak Time	04:39
Wind Integration %	27.97%

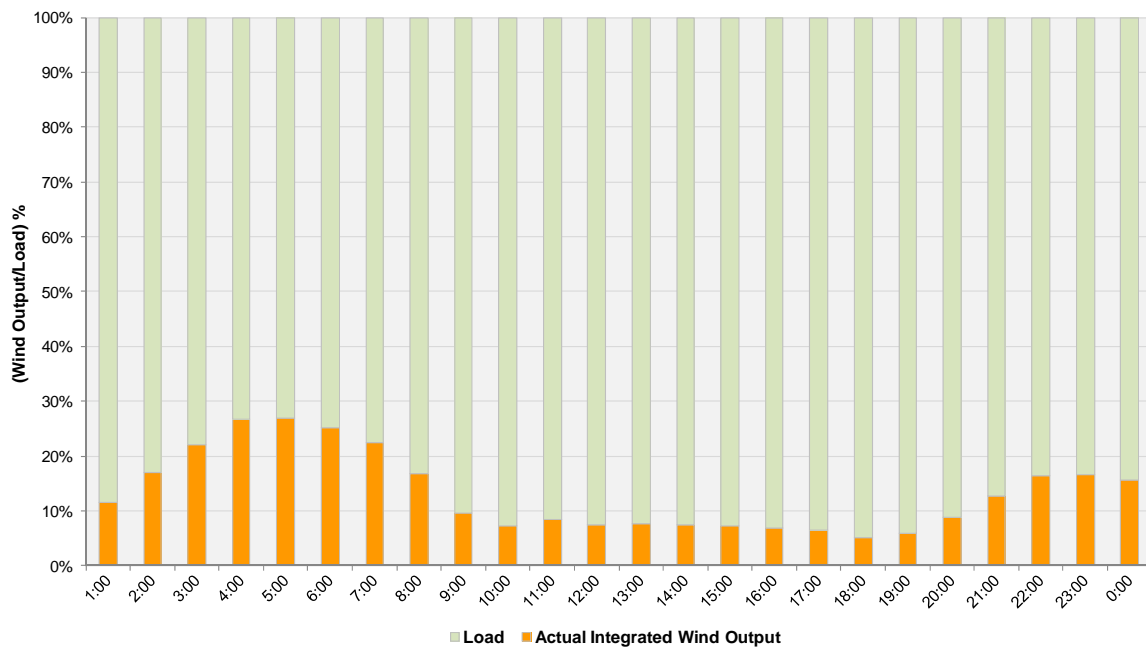
**Hourly Average Actual Load vs. Actual Wind Output
12-03-2011**



Actual Wind Output as a Percentage of the Total Installed Wind Capacity
12-03-2011



Actual Wind Output as a Percentage of the ERCOT Load
12-03-2011



ERCOT Load vs. Actual Wind Output 11/26/2011 - 12/3/2011

